



NOTICE OF RACE

1. Organiser

Lübeck Yacht-Club e.V.
Roockstraße 54
23568 Lübeck
www.lyc.de
www.brassfahrt.de

2. Competitor Groups

Seagoing keel yachts and multihulls that are sailed single-handed or by a crew of two are eligible to participate. The organiser reserves the right to exclude boats from participation that appear unsuitable for this event.

The skipper must either have a valid DSV driving license or an official and valid driving license that is required or recommended for the sailing area. For members of other national associations, a corresponding certificate of qualification from their country applies. The skipper must also be in possession of a valid radio certificate that is sufficient for the radio system on board and a valid ship station license.

The boats are divided into different groups according to their length as follows:

Group I: $L_H < 25$ ft

Group II: $25 \text{ ft} \leq L_H < 30$ ft

Group III: $30 \text{ ft} \leq L_H < 35$ ft

Group IV: $35 \text{ ft} \leq L_H < 40$ ft

Group V: $L_H \geq 40$ ft

Group VI: Multihulls

Within the individual groups you sail against each other without compensation. The best single-handed sailor within his group will receive a separate award.

3. Time schedule

The event will take place from 17 until 20 May 2024.



Participants check in on 17 May between 2:00 p.m. and 6:00 p.m. in the regatta office; The regatta office is located in the clubhouse (old lifeboat shed) of the Lübecker Yacht-Club at Leuchtenfeld in Travemünde. Information from the race committee is also posted on a bulletin board here.

From 8:00 p.m. there will be a come-together at Leuchtenfeld, during which the helmsman's meeting will also take place.

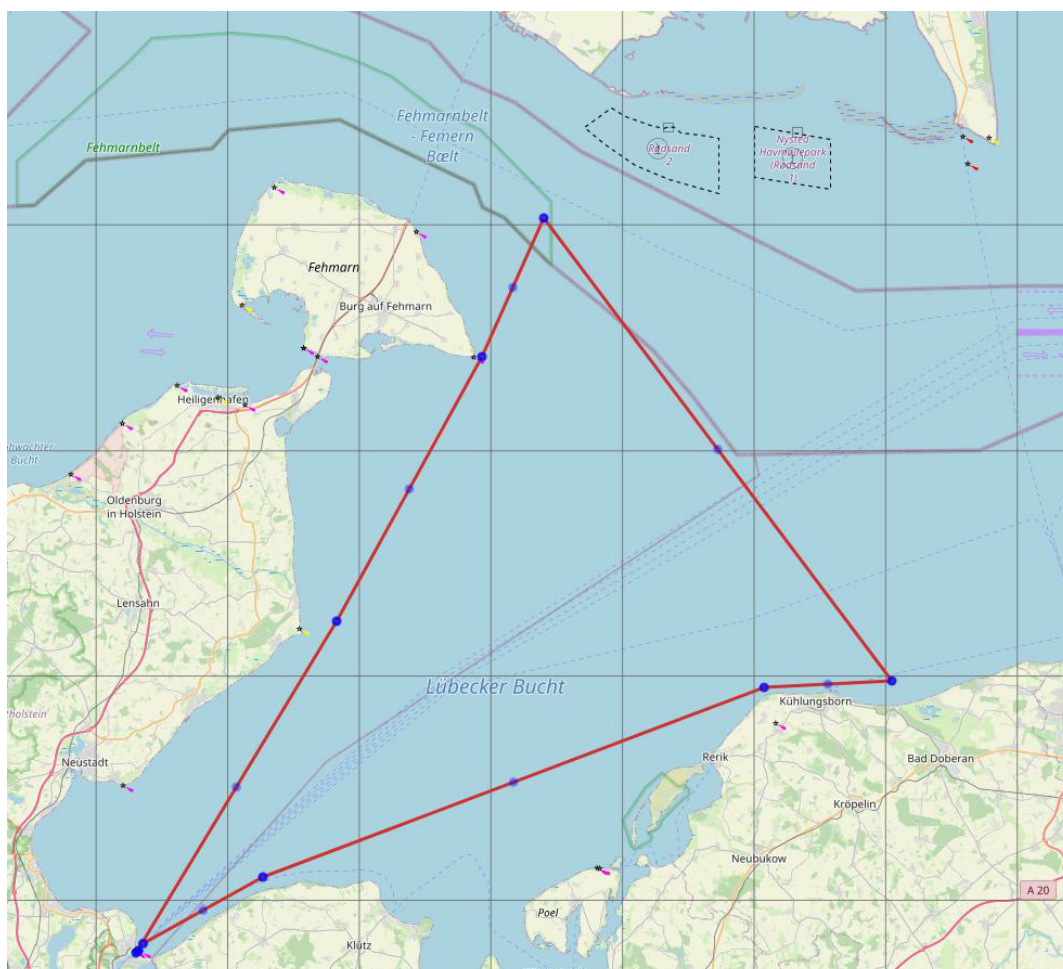
One race is being sailed. The start is on Saturday, May 18th, 2024, at 12:00 p.m. for the first starting group.

The time limit is Monday, 20 May 2024, at 12:00 p.m. Boats that finish after this will be classified as DNF.

4. Regatta Course

There will be a course of approx. 100 nautical miles through the Bay of Mecklenburg.

From the start in front of Travemünde, if the wind is westerly, it goes past Kühlungsborn via Kühlungsborn/Heiligendamm in the direction of Rødbyhavn/Fehmarnbelt and then from east of Fehmarn back to Travemünde; with wind from easterly directions in opposite order.



Source: openseamap.org



Any changes, such as shortening the course in calm weather or storms, will be announced during the helmsman's meeting.

5. Rules

The following rules apply:

- a) The International Regulations for Preventing Collisions at Sea 1972 (COLREG),
- b) the Racing Rules of Sailing 2021-2024, and
- c) the local regulations of the areas .

6. Registration

Registration takes place online via manage2sail from 17 December 2023 to 14 April 2024.

The registration fee is € 150.- for single-handed participants and € 175.- for double-handed participants and must be paid within 7 days of registration. Entries received between 17 and 31 December 2023 will receive a discount of € 25.- each ("Early Bird Ticket").

Participation is limited to 100 boats; Further entries will be placed on a waiting list and may move up if possible.

The obligation to payment of the registration fee is not omitted if the registration is withdrawn or if the boat is absent.

The registration fee will only be refunded if the registration is rejected.

7. Safety Regulations

Every boat participating in the race must provide the following safety equipment on board (based on the OSR safety guidelines, category 3):

- bailer
- life jacket(s) with lifeline(s), with valid inspection tag
- 2 jackstays, reaching from the cockpit to the foredeck
- searchlight or powerful torch
- knife, ready to hand in the cockpit
- 2 x signal flare, red
- 2 x signal torch, red
- fire extinguisher
- anchor with chain or rope, ready for deployment and suitable for the size of the boat
- first-aid kit



Life jackets are mandatory outside the cabin during the race.

Every competitor must be on call on VHF channel 16 or the relevant local channel during the race; also he or she must have provided their mobile number and the telephone number of a contact person on land at the check-in.

All boats are to have permanently installed navigation lights in accordance with COLREG; this also applies to boats under 7 m in length. Failure to do so will result in disqualification. If the navigation lights fail, the race must be quitted immediately. Note: It is recommended to carry a set of spare/emergency navigation lights.

The provision of the safety equipment will be randomly checked before the start.

8. Tracking

The race is tracked via the TracTrac system.

Each participating ship will be given a transponder at check-in, which must be returned promptly after the regatta.

During the race, all participants can follow the tracking live; the tracking link will be published with the sailing instructions.

9. Interruption/Abandonment

Boats that abandon the race must inform the race committee immediately by phone.

It is permitted to interrupt the race up to a total of 5 hours by staying in ports, as long as the interruption occurs without engine support or other outside help.

10. Assistance and Sportsmanship

All participants are expected to provide assistance to the best of their ability in emergency situations. The use of the engine is expressly permitted without causing any disadvantages for the helping boat. A time allowance may be granted at the discretion of the race committee.

The race should have the character of a fun event, which is why sportsmanlike and comradely behaviour is particularly important. Tactical maneuvers are unaffected by this, though.



11. Protests

Protests must be reported in accordance with World Sailing Racing Rules 2021-2024, Part 5, Section A, Rule No. 61.

The written protest must be submitted within 1 hour after the last boat has crossed the finish line.

A red flag must be flown to indicate a protest.

The protest hearing will take place no later than 1 hour before the award ceremony.

12. Berths

The organiser will try to provide sufficient berthing facilities for external participants at the Travemünde Leuchtenfeld, at Passathafen and Fishery Port for the period from May 17th. until May 20, 2024. Local participants are asked to use their respective regular berths.

Unfortunately, the organiser cannot offer crane operations for boats. These have to be organised by the competitors themselves if necessary.

13. Non-Liability and Insurance

The participants confirm with their signature at check-in that they take part in the race at their own risk.

The organiser excludes any liability for personal injury and material damage. This exclusion applies to the time before, during and after the regatta.

Each participating boat must have valid liability insurance covering at least €5,000,000 per claim or equivalent.